

# Database in Single User mode

[Version 1.0]

Jason

[19/07/2021]



**QNE**  
**SOFTWARE**

## QNE TIPS

Product : QNE Optimum


Version: 1.00

Doc No : 1

Page No: 1 of 5

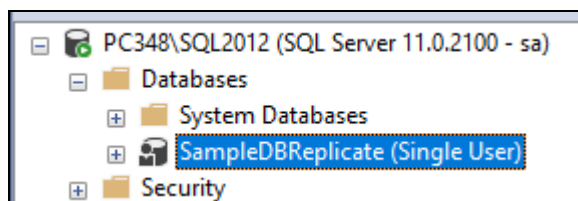
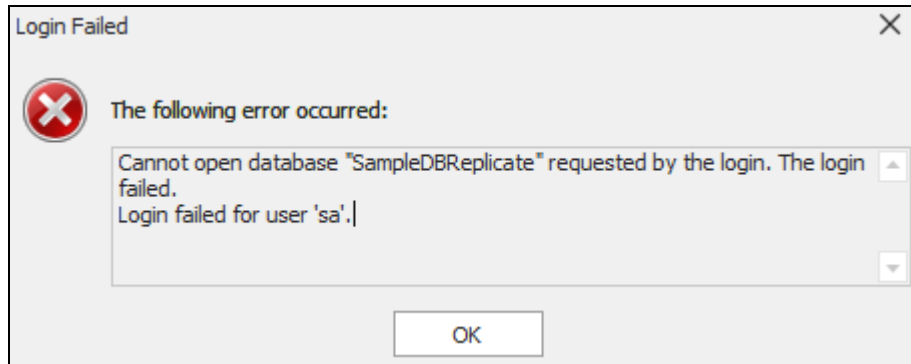
REV. No	Nature of Change	Prepared By	Prepared Date	Reviewed & Approved by
1.0	Creation	Jason	19/07/2021	Weina

Amendment Record

	QNE TIPS	
	Product : QNE Optimum	Version: 1.00
	Doc No : 1	Page No: 2 of 5

## SCENARIO


Unable to login more than 1 user and found that database is in Single User mode



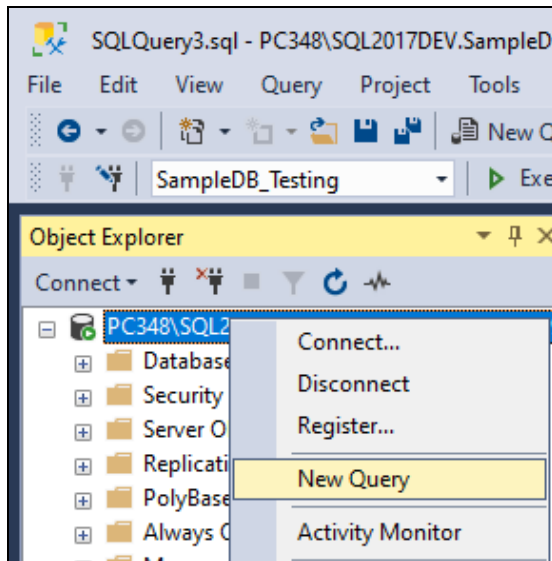
## SOLUTION

### Method 1:

1. Connect your database with SSMS (SQL Server Management Studio)  
<https://support.qne.com.my/a/solutions/articles/81000385373>
2. First, we need to kill all active connection/processes of the database

 <b>QNE</b> SOFTWARE	<b>QNE TIPS</b>	
	Product : QNE Optimum	Version: 1.00
	Doc No : 1	Page No: 3 of 5

3. Right-click your server instance in Object Explorer, and then select New Query




4. Paste the following T-SQL code snippet into the query window and replace 'SampleDBReplicate' to your database code:

```

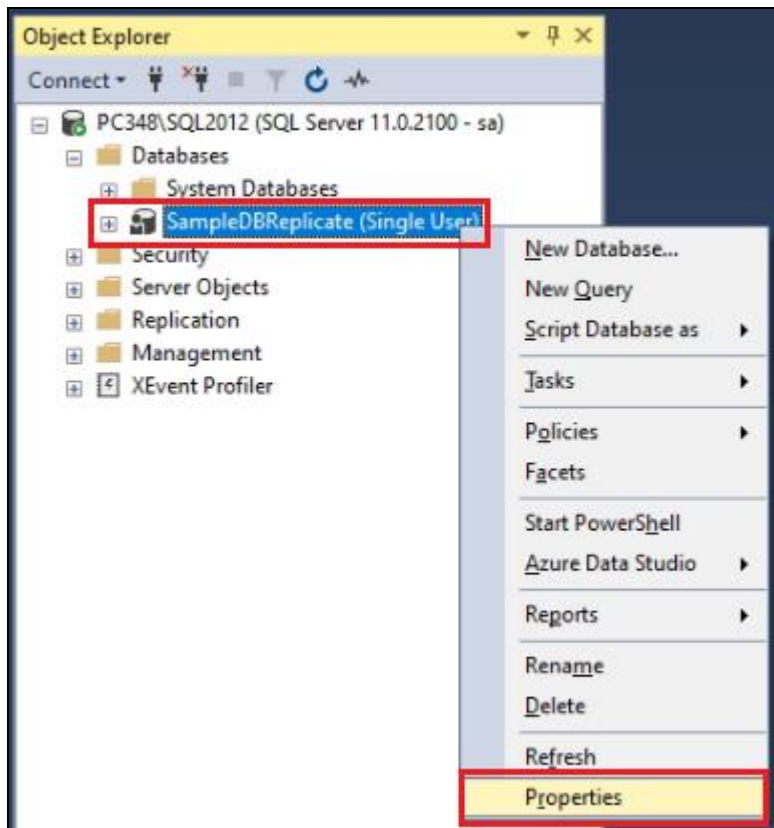
-----Replace SampleDBReplicate with your database name-----
USE master
GO
DECLARE @kill varchar(max) = '';
SELECT @kill = @kill + 'KILL ' + CONVERT(varchar(10), spid) + '; '
FROM master..sysprocesses
WHERE spid > 50 AND dbid = DB_ID('SampleDBReplicate')
EXEC(@kill);

```


5. Execute query and all active connection and processes of the database has been terminated
6. Now proceed to set the database access from Single User to Multi-User

 <b>QNE</b> SOFTWARE		<b>QNE TIPS</b>	
Product : QNE Optimum		Version: 1.00	
Doc No : 1		Page No: 4 of 5	

7. Right-click on the 'Single User Mode' database and select Properties



8. Go to Options and scroll to bottom
9. Under category 'State', change 'Restrict Access' from 'SINGLE\_USER' to 'MULTI\_USER' and click okay

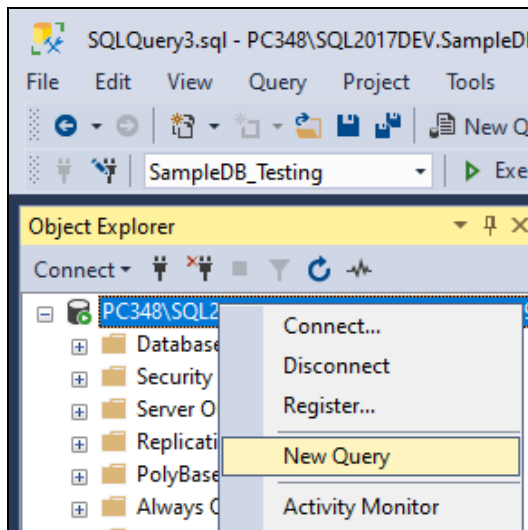
 <b>QNE</b> SOFTWARE	<b>QNE TIPS</b>	
	Product : QNE Optimum	Version: 1.00
	Doc No : 1	Page No: 5 of 5

#### Method 2:

1. Connect your database with SSMS (SQL Server Management Studio)

<https://support.qne.com.my/a/solutions/articles/81000385373>

2. Right-click your server instance in Object Explorer, and then select New Query



3. Paste the following T-SQL code snippet into the query window and replace 'SampleDBReplicate' to your database code:

```

-----Replace SampleDBReplicate with your database name-----
USE master
GO
DECLARE @kill varchar(max) = '';
SELECT @kill = @kill + 'KILL ' + CONVERT(varchar(10), spid) + '; '
FROM master..sysprocesses
WHERE spid > 50 AND dbid = DB_ID('SampleDBReplicate')
EXEC(@kill);

GO
SET DEADLOCK_PRIORITY HIGH
ALTER DATABASE [SampleDBReplicate] SET MULTI_USER WITH NO_WAIT
ALTER DATABASE [SampleDBReplicate] SET MULTI_USER WITH ROLLBACK IMMEDIATE
GO

```

4. Execute query and it will kill all active connection/ processes and set database access from single User to Multi-User

**\*\* Learn [How to rebuild and reorganize indexes](#)**

**\*\* Learn more about [Azure Cloud](#)**

**\*\* Learn more about [QNE Hybrid Cloud Software](#)**