

How to set auto update in QNE?

[1.0]

Roseanne Lee

[10/9/2021]



QNE
SOFTWARE

QNE TIPS

Product : QNE Optimum

Version: 1.00

Doc No : 1

Page No: 1 of 5

REV. No	Nature of Change	Prepared By	Prepared Date	Reviewed & Approved by
1.0	Creation	Roseanne Lee	10/9/2021	
1.1	Modification	Roseanne Lee	19/11/2021	

Amendment Record



SCENARIO

How to set auto upgrade, once server has been upgraded the new version other computer will automatically upgrade once the user login system?

SOLUTION

AT SERVER

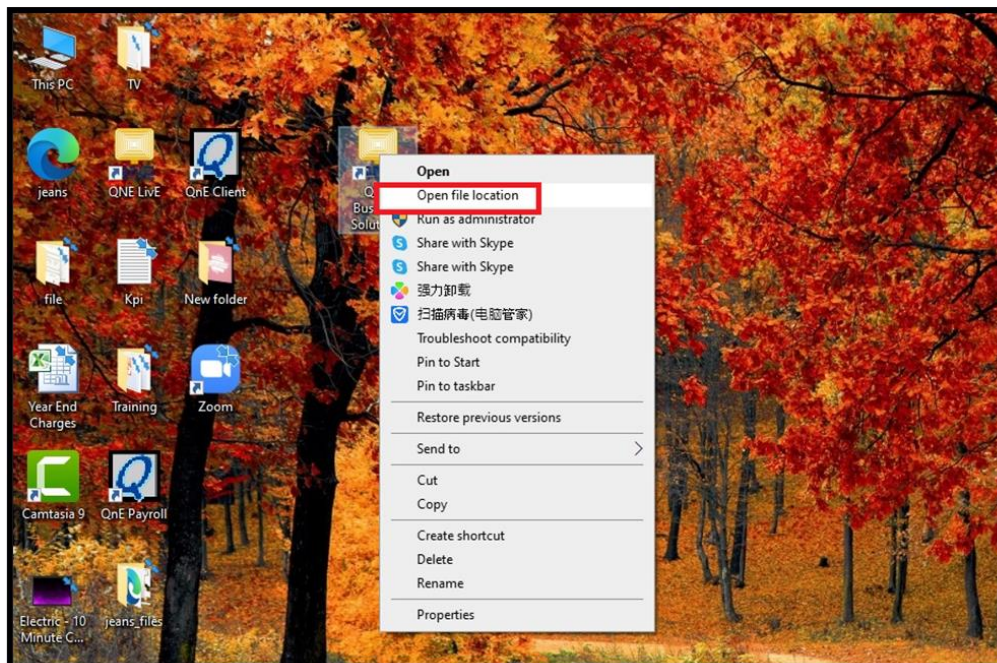
Create a share folder. Example "Optimum Update".


Note:

- * Paste the new version in this folder if you would like to perform upgrade.
- * Rename the installer file to "Setup.exe"
- * This folder must be shared

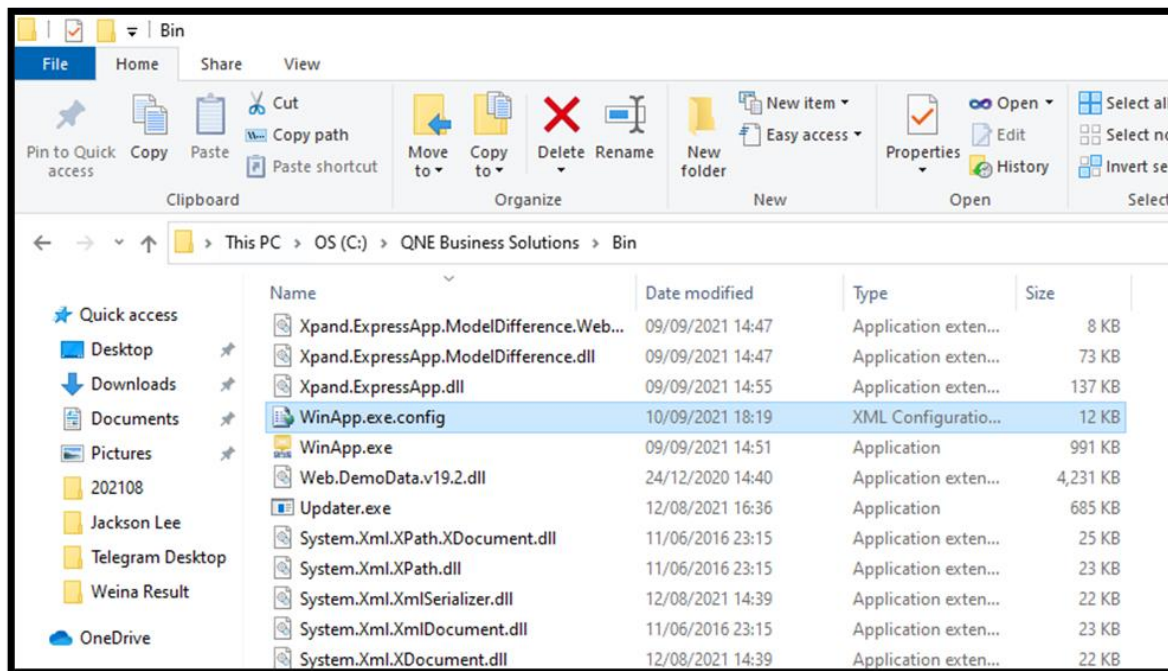
AT WORKSTATION

Step 1: At the workstation → point to QNE icon → right click → open file location

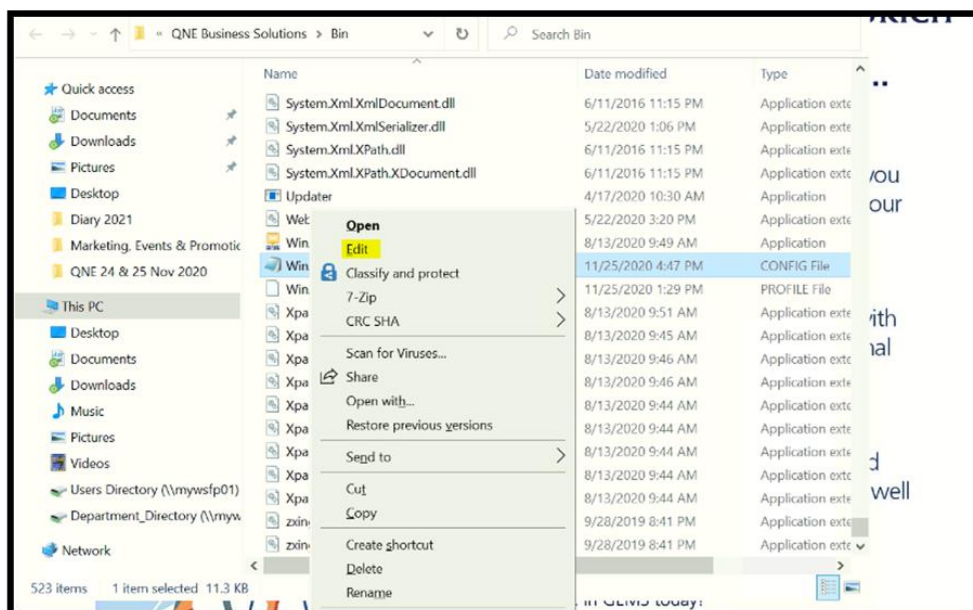


		QNE TIPS	
Product : QNE Optimum		Version: 1.00	
Doc No : 1		Page No: 3 of 5	

Step 2: You will access to C:\QNE Business Solutions\Bin
Inside this folder, point to WinApp.exe.config



Step 3: Right click → Edit (Open it in notepad)






Step 4: Look for <add key="NewVersionInstaller" value="\\SERVER-PC\Optimum Update\Setup.exe" />
Change the path and point it to Server.

[\\<ServerName>\<Share Folder>\Setup.exe](#)

Sample output: "\\PC202\Optimum Update\Setup.exe" />

It points to your server folder. If you did not configure it, even though u you paste the latest version in the shared folder, the workstation will not auto upgrade if there is new version available.

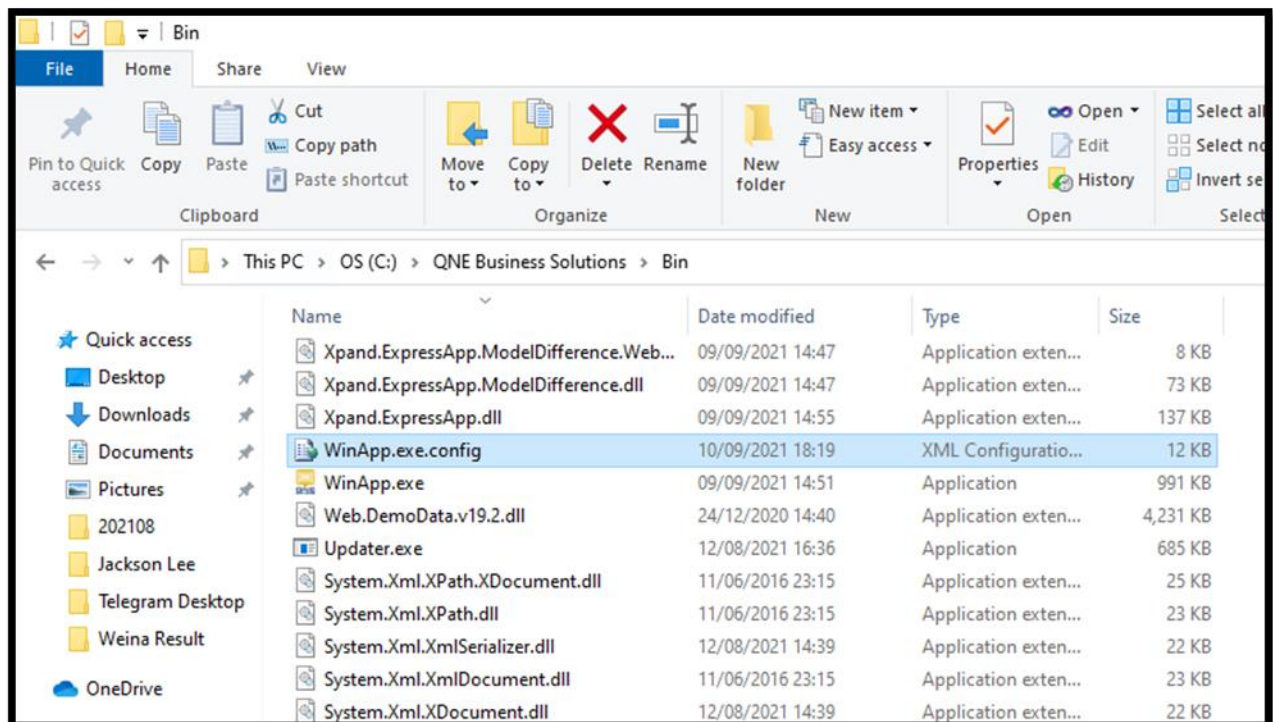
```
WinApp.exe - Notepad
File Edit Format View Help
<?xml version="1.0" encoding="utf-8"?>
<configuration>
  <configSections>
    <section name="DatabaseConfigurations" type="QnEBS.Sys.Config.CompanyConfiguration, QnEBS.Sys"
    <section name="log4net" type="log4net.Config.Log4NetConfigurationSectionHandler, log4net" />
    <section name="DevExpressXpoProfiler" type="DevExpress.Xpo.Logger.ProfilerConfigSection, DevExp
  </configSections>
  <appSettings>
    <add key="ConfigVer" value="1" />
    <add key="DataProvider" value="System.Data.SqlClient" />
    <add key="DefaultCompany" value="ZurichLife" />
    <add key="IsAccountDate" value="False" />
    <add key="AccountDate" value="" />
    <add key="UserName" value="qneadmin" />
    <add key="AppVersion" value="2019.1.1.4" />
    <add key="EnableDiagnosticActions" value="false" />
    <add key="Languages" value="zh-Hans;en-PH;en-IN;en-MY;en;de;es;ja;ru" />
    <add key="IgnoreUserModelDiffs" value="false" />
    <add key="ClientSettingsProvider.ServiceUri" value="" />
    <add key="ApplicationFont" value="Name=Tahoma, Size=8.25" />
    <add key="NewVersionInstaller" value="\\\\SERVER-PC\\\\Optimum Update\\\\Setup.exe" />
    <add key="RecentCompanies" value="ZurichLife|Sample Company" />
    <add key="CountryCode" value="MV" />
  </appSettings>
</configuration>
```


		QNE TIPS	
Product : QNE Optimum		Version: 1.00	
Doc No : 1		Page No: 5 of 5	

SHORT CUT

For the second option, after you have configured for 1 of the workstations, you can copy “WinApp.exe.config” file and replace to another computer.

Replace in QNE Business Solution > Bin Folder.



When user login QNE from Workstation, there is a message prompt as below. Just click ok



NOTE

Update Server Credential if the workstation need to enter user name and password when access to the server

