

# STOCK VALUE INTEGRATION WITH PROJECT & LOCATION

[1.0]

ROSEANNE LEE

[27/04/2022]



**QNE**  
**SOFTWARE**

## QNE TIPS

Product : QNE Optimum

Version: 1.00

Doc No : 1

Page No: 1 of 6

REV. No	Nature of Change	Prepared By	Prepared Date	Reviewed & Approved by
1.0	Creation	Roseanne	27/4/2022	


Amendment Record



### SCENARIO

In normal package, if user would like to update closing stock value, user will generate the 'Month End Stock by Location' report, then key-in in Stock Value Maintenance manually by selecting the project code 1 by 1. User seek for a solution which there is an auto update by clicking import button system automatically update closing stock value.

Note: In user's scenario, once created the location code there will be a project code as well. Both are using same code.

 **Stock Value Maintenance**

Stock Account

B/S Account

700-0600: STOCK

Opening Stock

201-0000: OPENING STOCKS

Closing Stock

209-0000: CLOSING STOCKS

Period

Stock Year

2022

Filter

Project

PROJECT A

Monthly Closing Balance

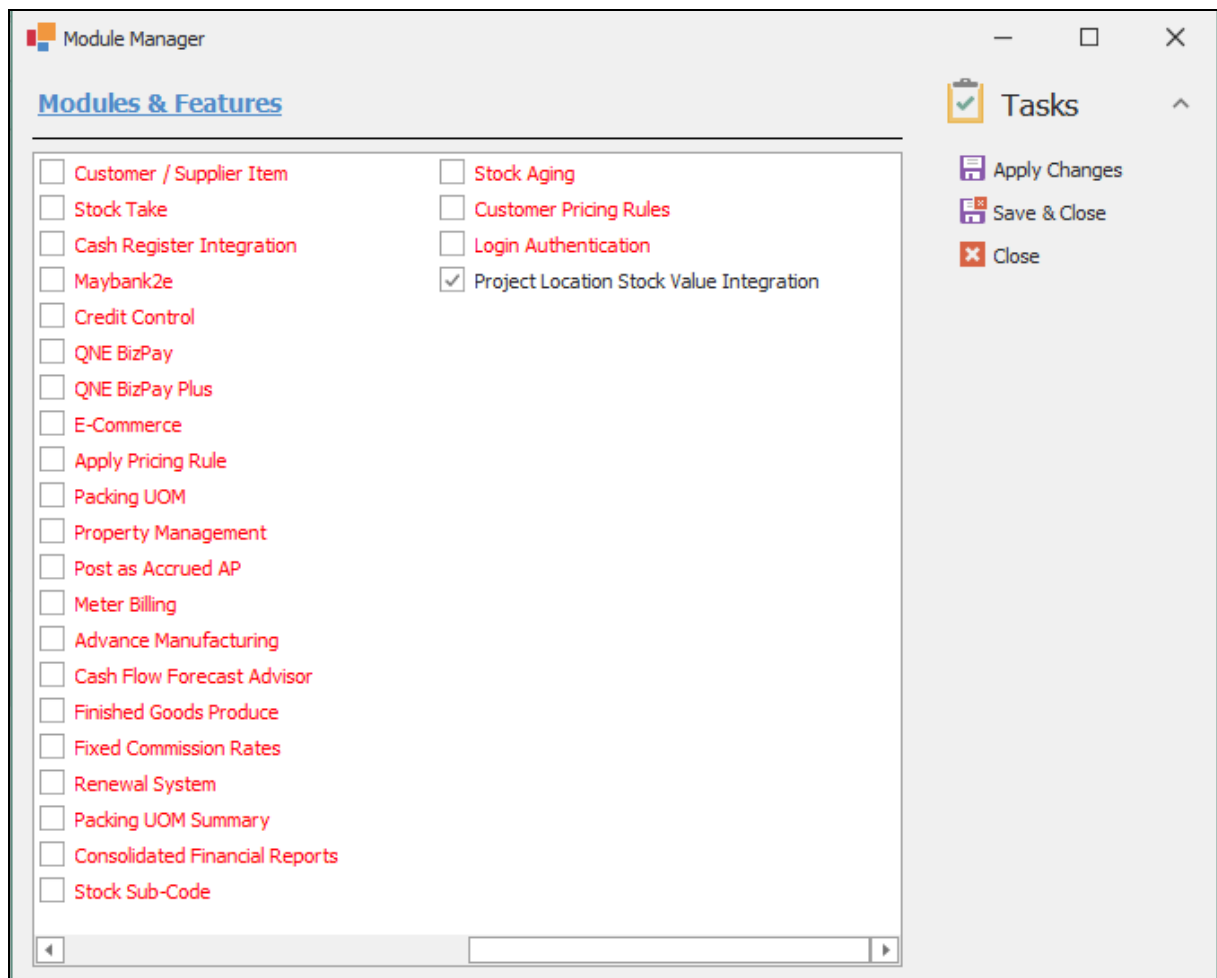
Month	Stock Value
January	0.00
February	0.00
March	0.00
April	600.00
May	0.00
June	0.00
July	0.00
August	0.00
September	0.00
October	0.00
November	0.00
December	0.00



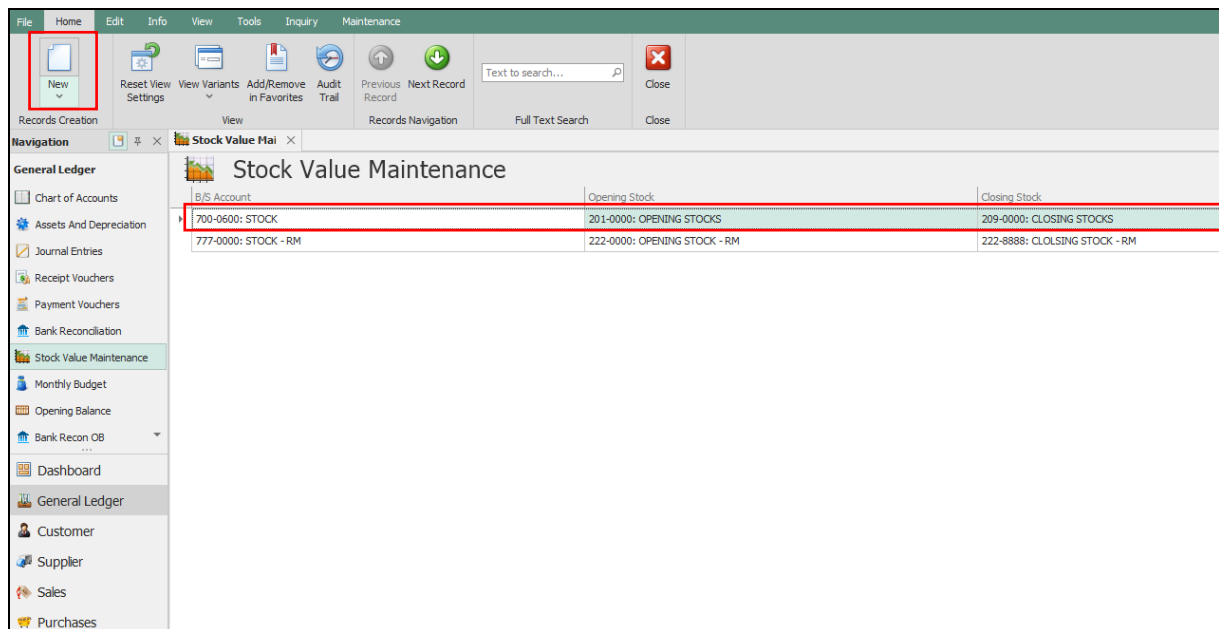
## SOLUTION

1. File > Modules > Ensure Project Location Stock Value Integration module is ticked

Remark: This is additional module; additional charges will be occurred. Kindly contact your dealer if you are interested

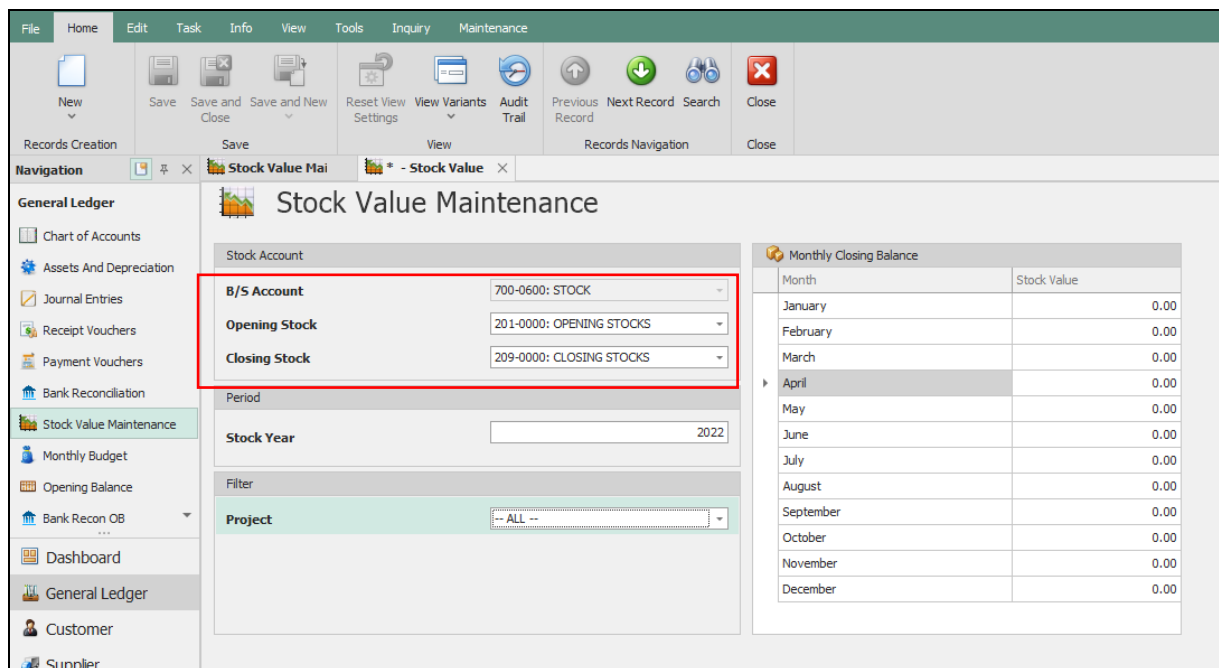


2. Go to General Ledger > Stock Value Maintenance, create Stock Value Maintenance  
Click New if you haven't create.



B/S Account	Opening Stock	Closing Stock
700-0600: STOCK	201-0000: OPENING STOCKS	209-0000: CLOSING STOCKS
777-0000: STOCK - RM	222-0000: OPENING STOCK - RM	222-8888: CLOSING STOCK - RM

Notice that B/S Account, Opening Stock & Closing Stock has updated.  
For the example here, notice that B/S Account 700-0600

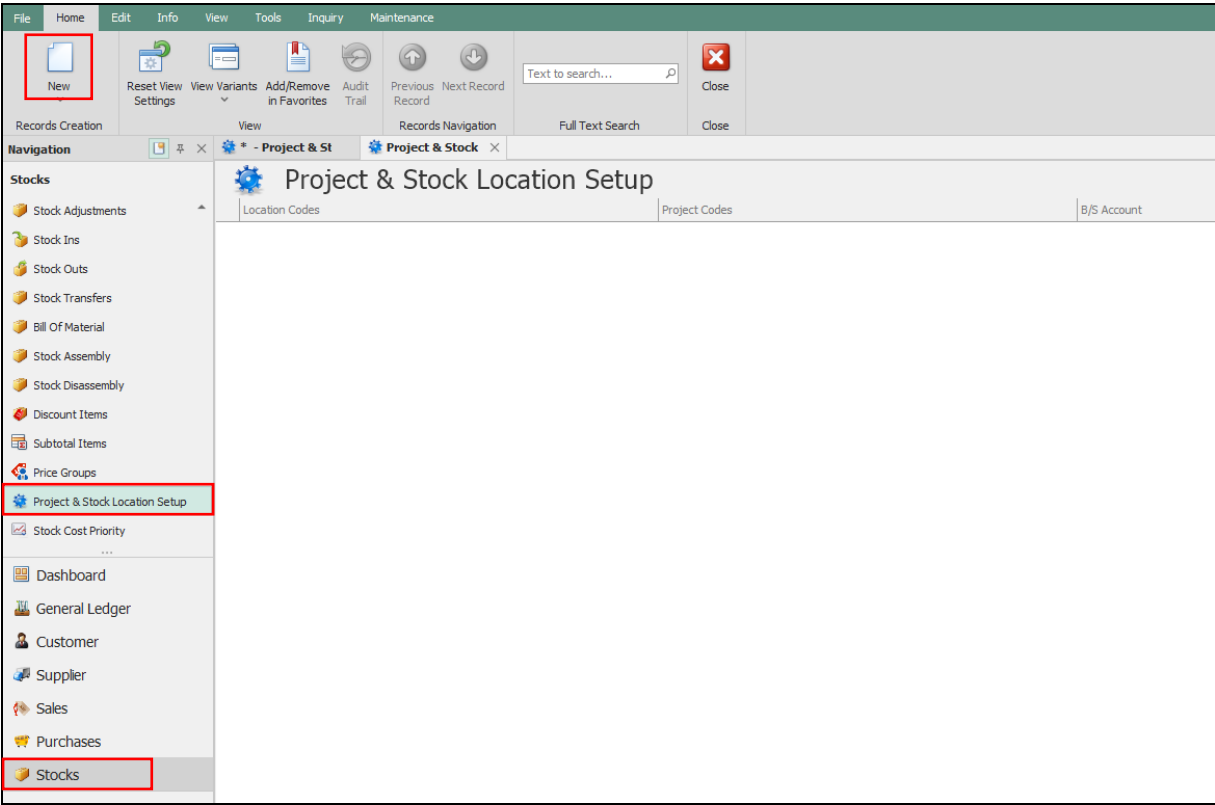


Stock Account	B/S Account	Opening Stock	Closing Stock
	700-0600: STOCK	201-0000: OPENING STOCKS	209-0000: CLOSING STOCKS

Month	Stock Value
January	0.00
February	0.00
March	0.00
April	0.00
May	0.00
June	0.00
July	0.00
August	0.00
September	0.00
October	0.00
November	0.00
December	0.00

3. Go to Stock > Project & Stock Location Setup, Click to configure the setting

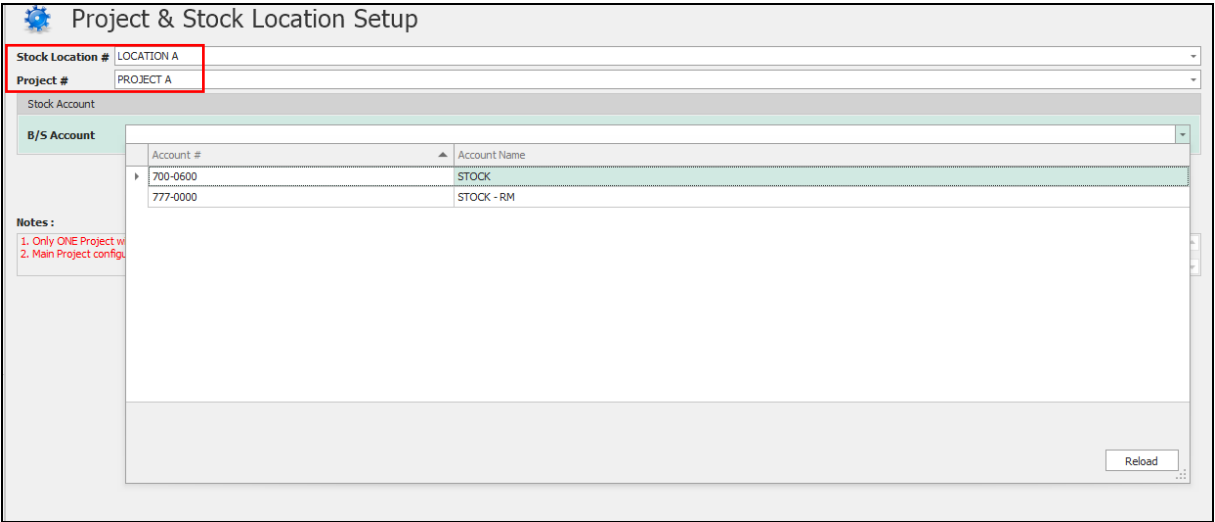



Configure the Stock Location and Project and select the B/S Account.

Note 1 : B/S Account has been setup at in step 2

Note 2: Only ONE Project with ONE Location is allow to configure to avoid system conflict

Note 3: Main Project configuration is not available as Stock Value Maintenance figure is viewed by Sub Project only.



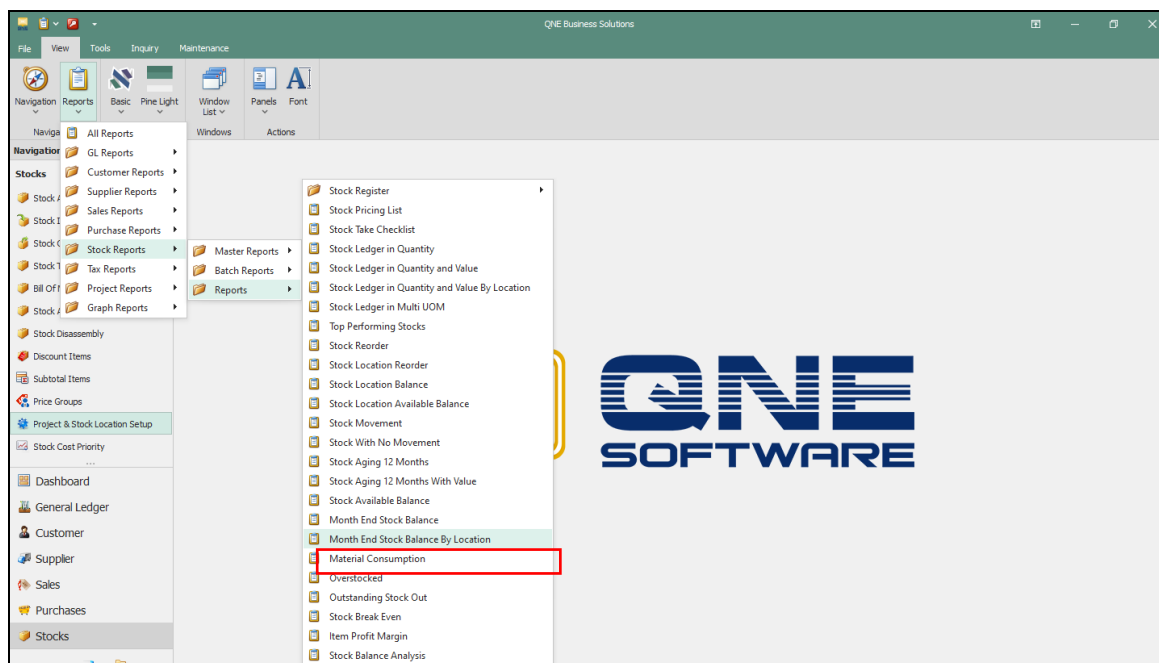
 <b>QNE</b> SOFTWARE	<b>QNE TIPS</b>	
	Product : QNE Optimum	Version: 1.00
	Doc No : 1	Page No: 6 of 6

So finally, you will need to setup all Locations & Projects with the B/S Account.

Note : Please define Non-Location as well

Project & Stock Location Setup		
Location Codes	Project Codes	B/S Account
LOCATION A	PROJECT A	700-0600
LOCATION B	PROJECT B	700-0600
Non-Location	Non-Project	700-0600

4. Go to View > Reports > Stock Reports > Month End Stock by Location



5. Update the date as end of month, else system will not allow to import.

Example we import for April Stock Value. You can filter by Location if you have too many

**Month End Stock Balance By Location**

Options Inquiry

Filter Selection

As Of Date: 30/04/2022

Stock: [Dropdown] To: [Dropdown]

Category: [Dropdown] To: [Dropdown]

Group: [Dropdown] To: [Dropdown]

Class: [Dropdown] To: [Dropdown]

Preset: [Dropdown] To: [Dropdown]

Location: [Dropdown] To: [Dropdown]

Options

☐ Include Zero Balance ☐ Include Inactive Stock ☐ Include Stock Transfer

☐ Separate Calculation In Difference Location ☐ Use Stock Transfer Cost(WA Only)



**QNE**  
SOFTWARE

## QNE TIPS

Product : QNE Optimum

Version: 1.00

Doc No : 1


Page No: 7 of 6

6. Click Inquiry, system will show all items with locations. For those items do not define location in the transactions, system will display in non-location

Stock Location	CODE	NAME	UOM	BALANCE	Unit Cost	AMOUNT
ITEM A	ITEM A	ITEM A	UNIT(S)	1	175.00	175.00
ITEM B	ITEM B	ITEM B	UNIT(S)	1	233.33	233.33
						SUM=408.33
LOCATION A						
LOCATION A	ITEM A	ITEM A	UNIT(S)	1	175.00	175.00
LOCATION A	ITEM B	ITEM B	UNIT(S)	2	233.33	466.67
						SUM=641.67
LOCATION B						
LOCATION B	ITEM A	ITEM A	UNIT(S)	1	175.00	175.00
						SUM=175.00
LOCATION C						
LOCATION C	ITEM A	ITEM A	UNIT(S)	1	175.00	175.00
						SUM=175.00
						1,400.00

Click 'Import To SVM', system will display message "Import Successful" if all locations have been defined.

Stock Location	CODE	NAME	UOM	BALANCE	Unit Cost	AMOUNT
ITEM A	ITEM A	ITEM A	UNIT(S)	1	133.33	133.33
ITEM B	ITEM B	ITEM B	UNIT(S)	1	233.33	233.33
						SUM=366.67
LOCATION A						
LOCATION A	ITEM A	ITEM A	UNIT(S)	1	133.33	133.33
LOCATION A	ITEM B	ITEM B	UNIT(S)	2	233.33	466.67
						SUM=600.00
LOCATION B						
LOCATION B	ITEM A	ITEM A	UNIT(S)	1	133.33	133.33
						SUM=133.33
						1,100.00

	<b>QNE TIPS</b>	
	Product : QNE Optimum	Version: 1.00
	Doc No : 1	Page No: 8 of 6

Else, system will not allow to import if a location yet to define. Please go back to step 3

Month End Stock Balance By Location

Options Inquiry View Variants Import To SVM

Stock Location	CODE	NAME	UOM	BALANCE	Unit Cost	AMOUNT
ITEM A			UNIT(S)	1	175.00	175.00
ITEM B			UNIT(S)	1	233.33	233.33
						SUM=408.33
<b>LOCATION A</b>						
LOCATION A	ITEM A		UNIT(S)	1	175.00	175.00
LOCATION A	ITEM B		UNIT(S)	2	233.33	466.67
						SUM=641.67
<b>LOCATION B</b>						
LOCATION B	ITEM A		UNIT(S)	1	175.00	175.00
						SUM=175.00
<b>LOCATION C</b>						
LOCATION C	ITEM A	ITEM A	UNIT(S)	1	175.00	175.00
						SUM=175.00
						1,400.00

**Operation Aborted**

Import Process Aborted. There are some Locations is not linked with Project.

Total Location not setup: 1  
List of Locations not linked : LOCATION C

OK

7. Go back to Stock Value Maintenance, system will update the Closing Stock Value as the figure in in Month End Stock By Location Report

General Ledger

Chart of Accounts Assets And Depreciation Journal Entries Receipt Vouchers Payment Vouchers Bank Reconciliation Stock Value Maintenance Monthly Budget Opening Balance Bank Recon OB Payment/Receipt Info Payment Method Maintenance Dashboard General Ledger Customer

**Stock Value Maintenance**

Stock Account

B/S Account 700-0600: STOCK

Opening Stock 201-0000: OPENING STOCKS

Closing Stock 209-0000: CLOSING STOCKS

Period

Stock Year 2022

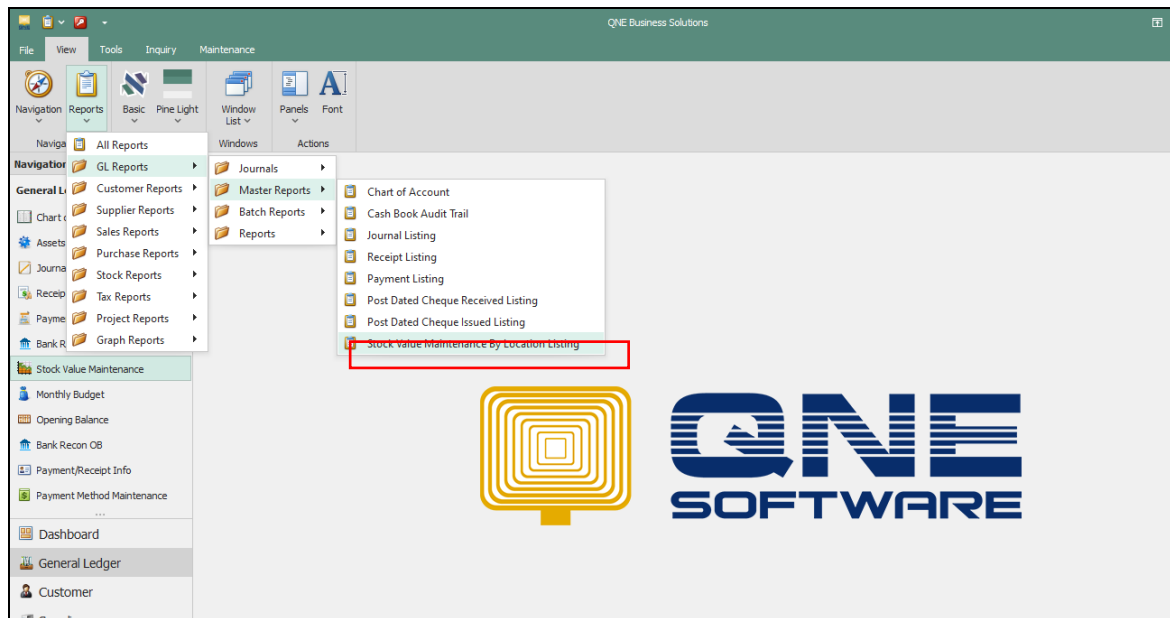
Filter

Project PROJECT A

Monthly Closing Balance

Month	Stock Value
January	0.00
February	0.00
March	0.00
April	600.00
May	0.00
June	0.00
July	0.00
August	0.00
September	0.00
October	0.00
November	0.00
December	0.00

8. Refer to View > Reports > GL Reports > Master Reports > Stock Value Maintenance by Location Listing Report



System displays the closing stock value as updated in Stock Value Maintenance

Stock Value Maintenance By Location as at 2022					
TESTING (12345796)		Page 1 of 1			
	Non-Location	LOCATION A	LOCATION B	LOCATION C	Grand Total
January	0.00	0.00	0.00	0.00	0.00
February	0.00	0.00	0.00	0.00	0.00
March	0.00	0.00	0.00	0.00	0.00
April	366.67	600.00	133.33	0.00	1,100.00
May	0.00	0.00	0.00	0.00	0.00
June	0.00	0.00	0.00	0.00	0.00
July	0.00	0.00	0.00	0.00	0.00
August	0.00	0.00	0.00	0.00	0.00
September	0.00	0.00	0.00	0.00	0.00
October	0.00	0.00	0.00	0.00	0.00
November	0.00	0.00	0.00	0.00	0.00
December	0.00	0.00	0.00	0.00	0.00
Grand Total	366.67	600.00	133.33	0.00	1,100.00