

Login prompt No Such Host is known

[Version 1.0]

Jason Lee

[30 Aug 2022]



QNE
SOFTWARE

QNE Optimum TIPS

Product : QNE Optimum


Version: 1.00

Doc No : 1

Page No: 1 of 4

Amendment Record

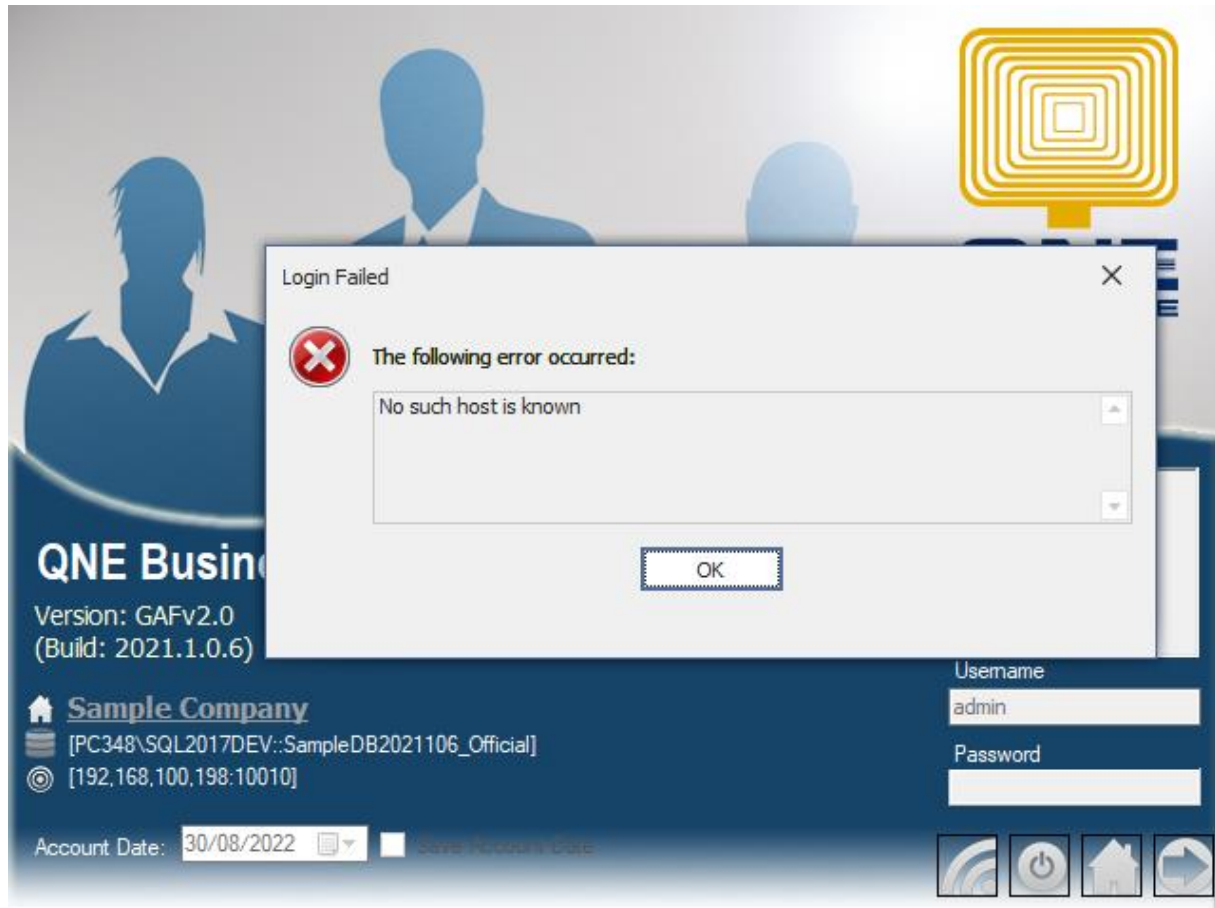
REV. No	Nature of Change	Prepared By	Prepared Date	Reviewed & Approved by
1.0	Creation	Jason Lee	30-Aug-2022	


 QNE SOFTWARE	QNE Optimum TIPS	
	Product : QNE Optimum	Version: 1.00
	Doc No : 1	Page No: 2 of 4

SCENARIO

Login QNE Optimum prompted below error

“No such host is known”



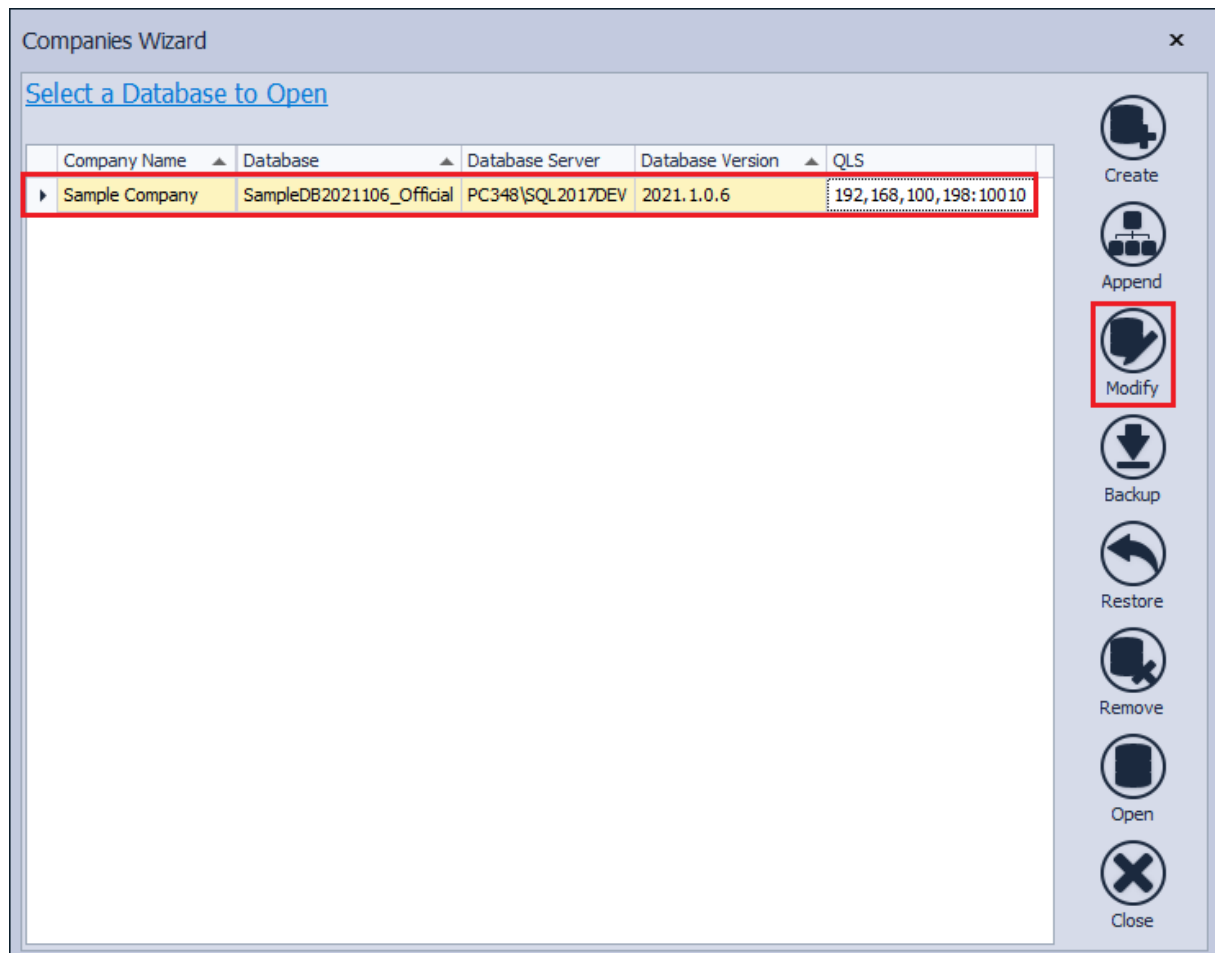
 QNE SOFTWARE	QNE Optimum TIPS	
	Product : QNE Optimum	Version: 1.00
	Doc No : 1	Page No: 3 of 4

SOLUTION

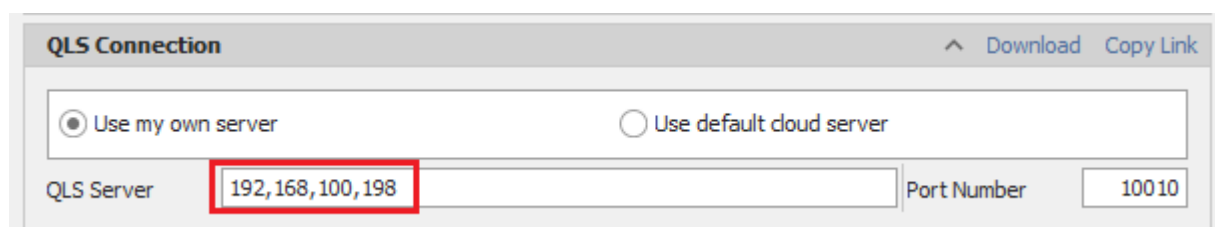
1. Click on Company Wizard (House Icon)



2. Select the Database that prompted error and click “Modify”



3. Double check the value keyed in “QLS Server” whether are there any typo
4. In below image, you can notice that there is typo.
5. The “dot” was wrongly entered as “comma”
6. Correct the typo and you will be able to login



** Learn more about [Azure Cloud](#)

** Learn more about [QNE Hybrid Cloud Software](#)