

SQL Server Configuration Manager prompt Cannot connect to WMI provider

[Version 1.0]

Jason Lee

[05 Dec 2022]



QNE
SOFTWARE

QNE Optimum TIPS

Product : QNE Optimum


Version: 1.00

Doc No : 1

Page No: 1 of 4

Amendment Record

REV. No	Nature of Change	Prepared By	Prepared Date	Reviewed & Approved by
1.0	Creation	Jason Lee	05-Dec-2022	

 QNE SOFTWARE		QNE Optimum TIPS	
Product : QNE Optimum		Version: 1.00	
Doc No : 1		Page No: 2 of 4	

SCENARIO

Open SQL Server Configuration Manager in SQL Server prompt

“Cannot connect to WMI provider. You do not have permission or the server is unreachable”



SQL Server Configuration Manager use Window Management Instrumentation (WMI) to view and change some server settings. When connecting to servers, SQL Server Configuration Manager uses WMI to obtain the status of the SQL Server (MSSQLSERVER) and SQL Server Agent services. This problem occurs because the WMI provider is removed when you uninstall an instance of SQL Server.

This file is located in the %programfiles(x86)% folder.



SOLUTION

1. The MOF file (sqlmgmproviderxpsp2up.mof) for your SQL instance is found in "%programfiles(x86)%\Microsoft SQL Server\%nn\Shared" folder. Determine the location of the mofcomp file for your version using the following table as a reference:

Version	nn
Microsoft SQL Server 2019	150
Microsoft SQL Server 2017	140
Microsoft SQL Server 2016	130
Microsoft SQL Server 2014	120
Microsoft SQL Server 2012	100
Microsoft SQL Server 2008 R2	100
Microsoft SQL Server 2008	100
Microsoft SQL Server 2005	90


2. Launch CMD as Administrator
3. Change the directory to the folder location from No.1
4. Example:- using Microsoft SQL server 2012 then the command will be as below

```
Administrator: Command Prompt
Microsoft Windows [Version 10.0.19044.2251]
(c) Microsoft Corporation. All rights reserved.

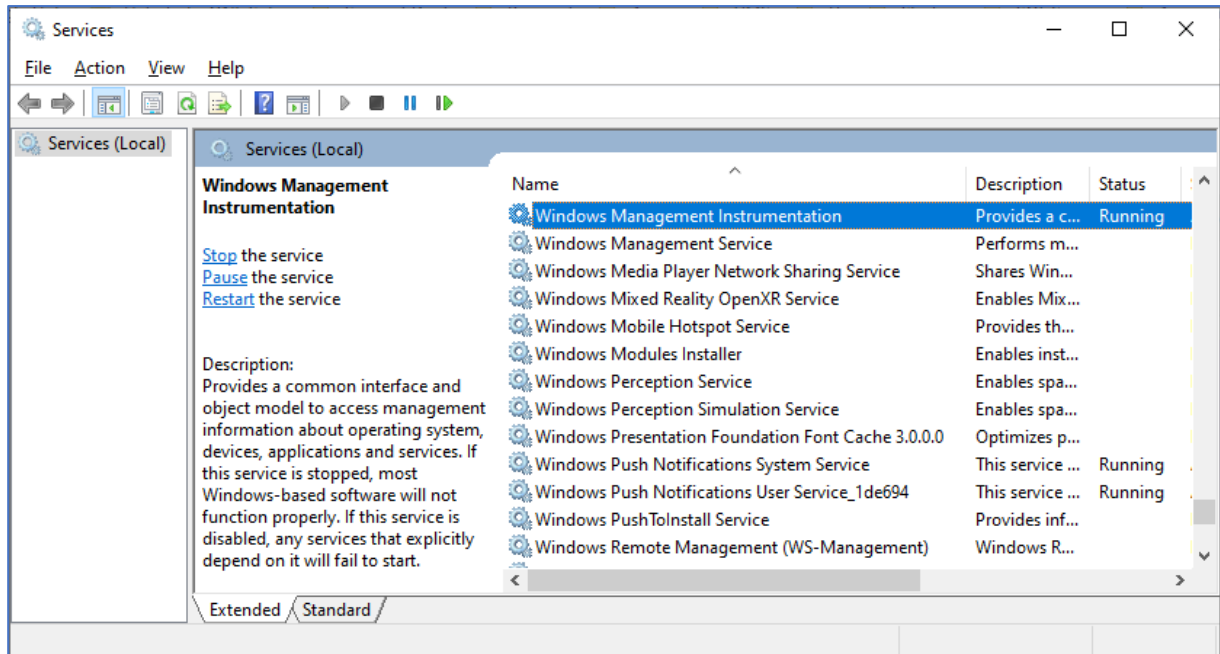
C:\WINDOWS\system32>cd %programfiles(x86)%\Microsoft SQL Server\100\Shared
C:\Program Files (x86)\Microsoft SQL Server\100\Shared>
```

5. Then type below command and press ENTER

```
Administrator: Command Prompt
C:\WINDOWS\system32>cd %programfiles(x86)%\Microsoft SQL Server\100\Shared
C:\Program Files (x86)\Microsoft SQL Server\100\Shared>mofcomp "sqlmgmproviderxpsp2up.mof"
Microsoft (R) MOF Compiler Version 10.0.19041.1
Copyright (c) Microsoft Corp. 1997-2006. All rights reserved.
C:\Program Files (x86)\Microsoft SQL Server\100\Shared>
```

 QNE SOFTWARE	QNE Optimum TIPS	
	Product : QNE Optimum	Version: 1.00
	Doc No : 1	Page No: 4 of 4

6. After you run the mofcomp tool, search and launch “Services”
7. Right-click on “Windows Management Instrumentation” and select “Restart”



8. If above steps do not work for you
9. Re-install new Microsoft SQL Server 2012 Express
10. Refer to <https://support.qne.com.my/support/solutions/articles/81000384679-how-to-install-sql-server-2012-express>

** Learn more about [Azure Cloud](#)

** Learn more about [QNE Hybrid Cloud Software](#)