

How to configure User Account Lock Out Policy ?

[Version 1.0]

Jason Lee

[07 March 2023]



QNE
SOFTWARE

QNE TIPS

Product : QNE Optimum


Version: 1.00

Doc No : 1

Page No: 1 of 4

Amendment Record

REV. No	Nature of Change	Prepared By	Prepared Date	Reviewed & Approved by
1.0	Creation	Jason Lee	07-Mar-2023	

 QNE SOFTWARE	QNE TIPS	
	Product : QNE Optimum	Version: 1.00
	Doc No : 1	Page No: 2 of 4

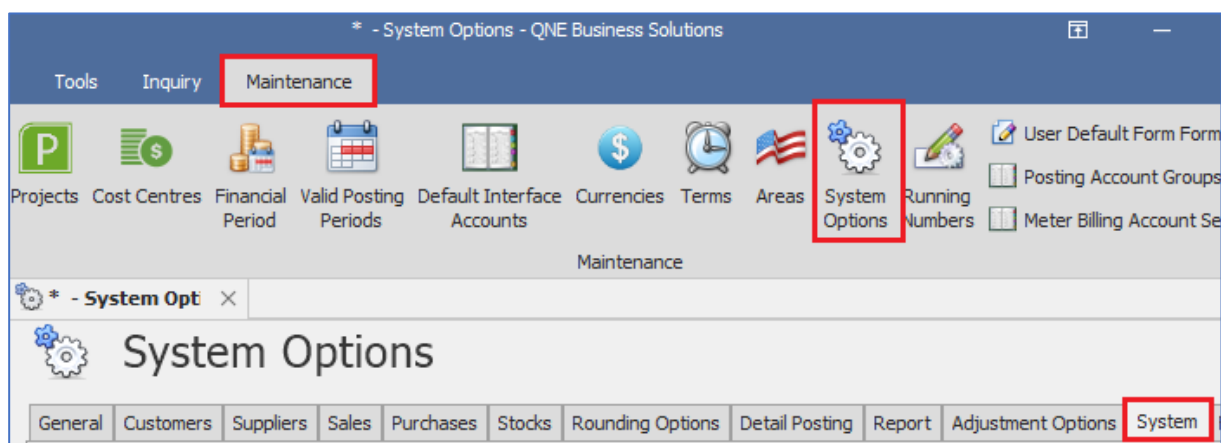
SCENARIO

A user account lockout policy is a security policy that determines when and for how long a user account should be locked out after entering a wrong password.

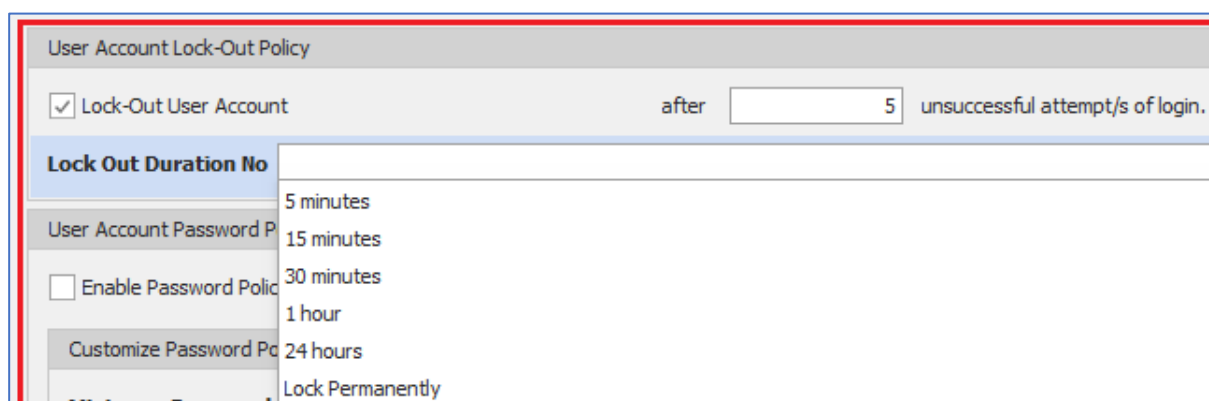
It can help prevent malicious users or hackers from guessing and cracking the user's password by using brute force.

SOLUTION


1. Go to Maintenance > System Options > System



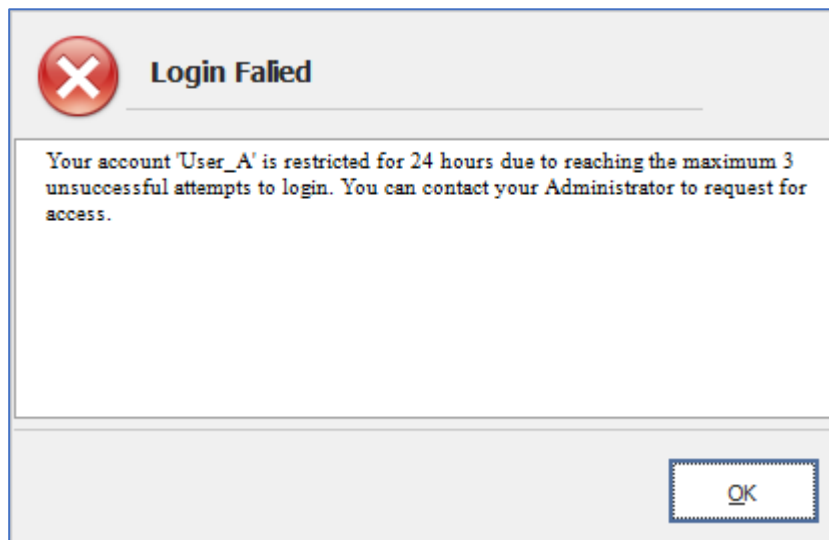
2. Under "User Account Lock-Out Policy", tick checkbox "Lock-Out User Account"
3. Key in "After x unsuccessful attempt/s of login" to define lock out an account after the user entered the wrong password x number of times.
4. Select lock out account for how long in "Lock Out Duration No"



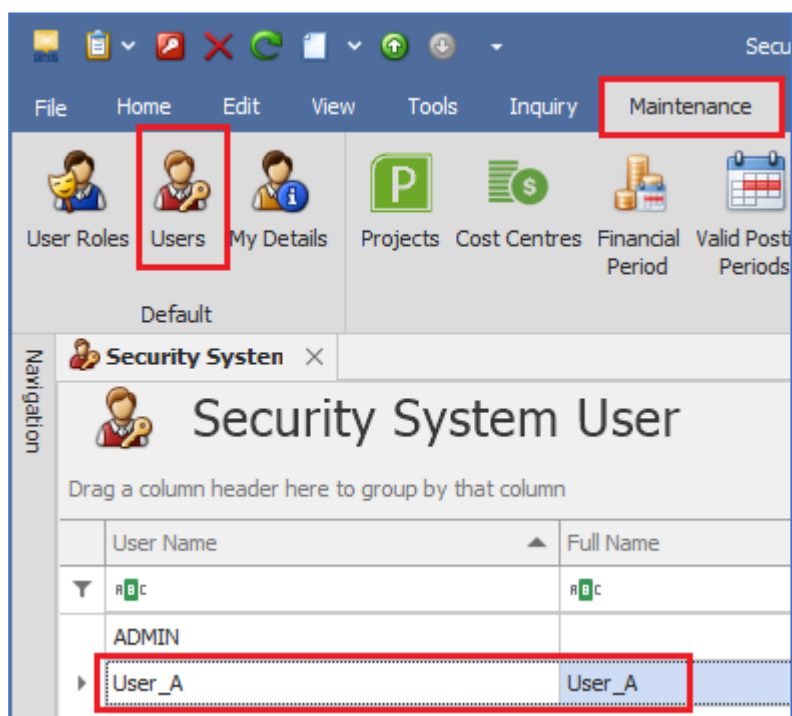
5. Click Save after configuration.


	QNE TIPS	
	Product : QNE Optimum	Version: 1.00
	Doc No : 1	Page No: 3 of 4

6. A “Login Failed” message will prompt when the user (User_A) enters the wrong password 3 times



7. Based on the above example, User_A can either wait for 24 hours or contact the “Administrator” user to Unlock the User Account.
8. To unlock the locked User Account, Administrator can go to Maintenance > Users > double-click on the locked User Account.



		QNE TIPS	
		Product : QNE Optimum	Version: 1.00
		Doc No : 1	Page No: 4 of 4

9. Go to Edit then click the “Unlock Account” button.
10. Now the “User_A” account is unlocked and able to login again.

**** Learn more about [How to reset user's password](#)**

**** Learn more about [Azure Cloud](#)**

**** Learn more about [QNE Hybrid Cloud Software](#)**