

# File data cannot be bigger than 5MB

[Version 1.0]

Jason Lee

[09 March 2023]



**QNE**  
**SOFTWARE**

## **QNE TIPS**

Product : QNE Optimum

Version: 1.00

Doc No : 1

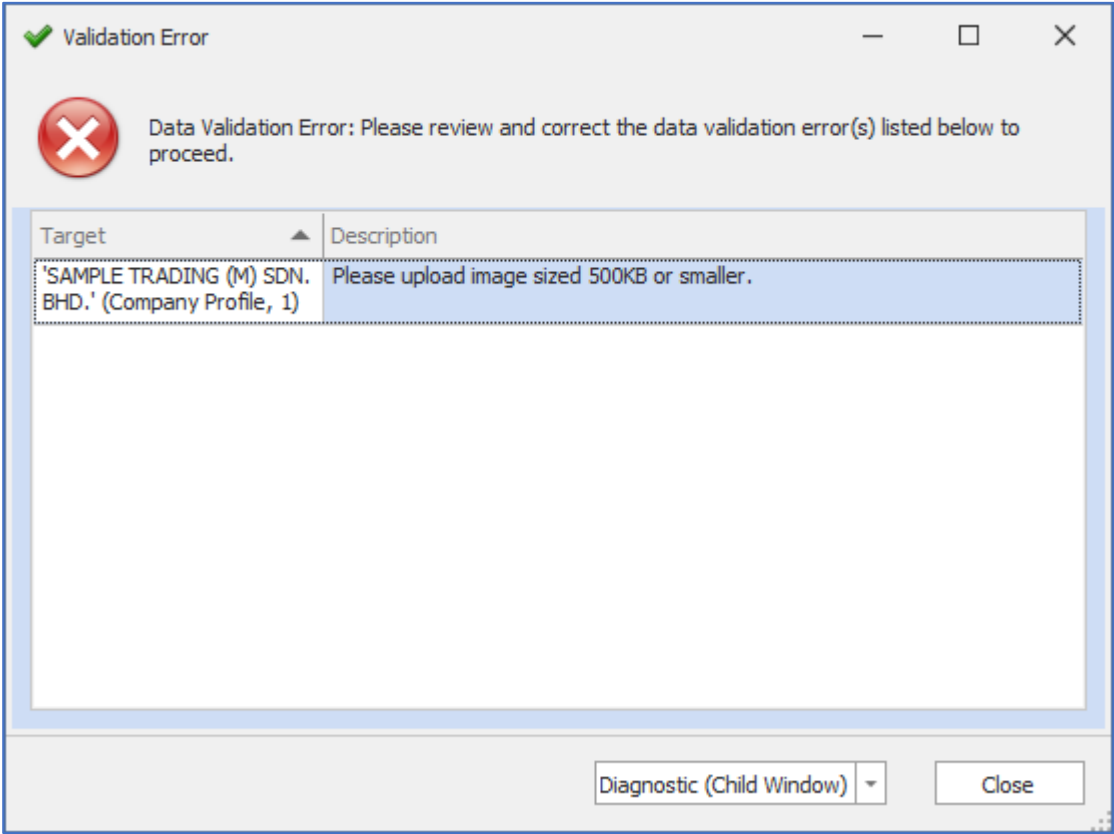
Page No: 1 of 4


### **Amendment Record**

REV. No	Nature of Change	Prepared By	Prepared Date	Reviewed & Approved by
1.0	Creation	Jason Lee	09-Mar-2023	

SCENARIO

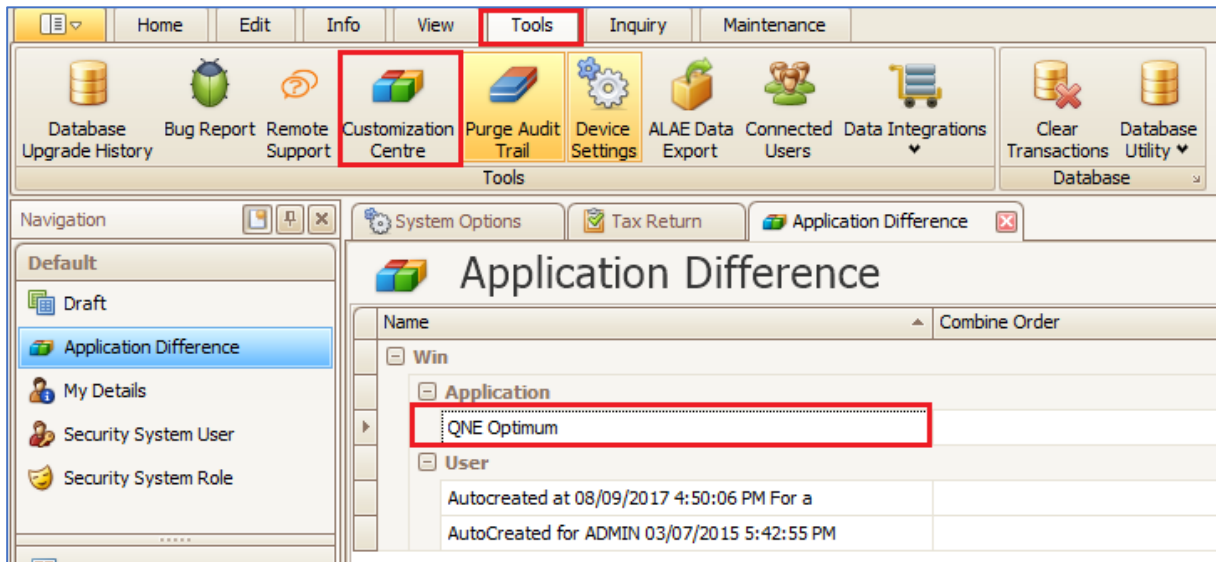
Uploading file that is bigger than 5mb/5000kb, Optimum will prompt



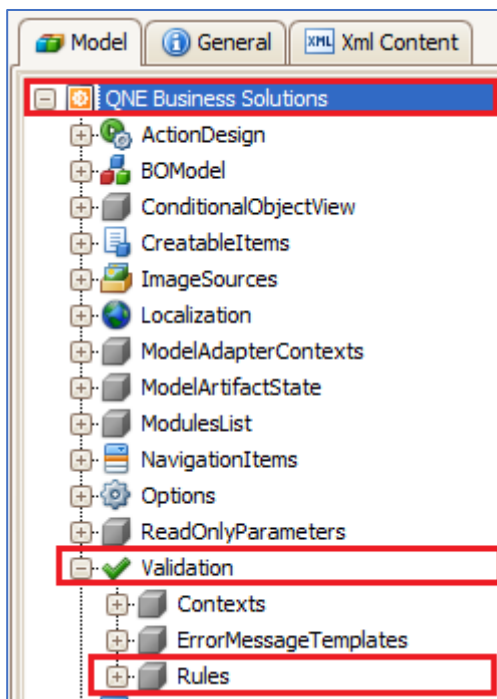
	QNE TIPS	
	Product : QNE Optimum	Version: 1.00
	Doc No : 1	Page No: 3 of 4


## SOLUTION

1. Go to Tools > Customization Centre
2. Double click on Application Difference “QNE Optimum”

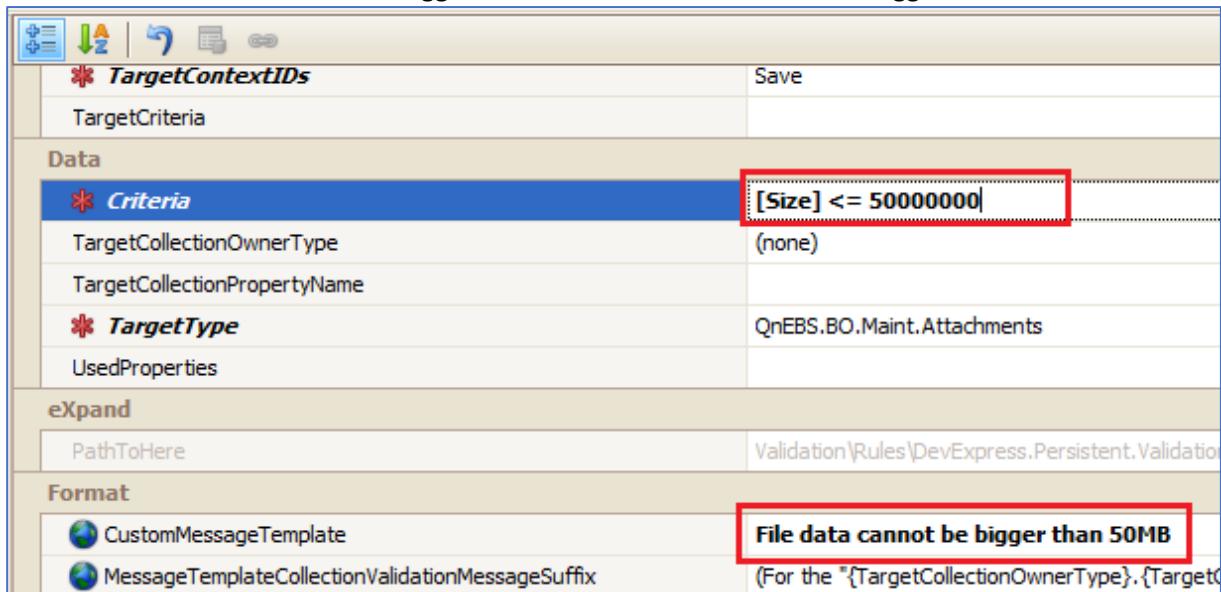


3. Expand QNE Business Solutions > expand Validation > expand Rules



 <b>QNE</b> SOFTWARE	<b>QNE TIPS</b>	
	Product : QNE Optimum	Version: 1.00
	Doc No : 1	Page No: 4 of 4

4. Search and highlight  
'DevExpress.Persistent.Validation.RuleCriteria\_QnEBS.BO.Maint.Attachments\_Size'
5. Change Criteria  
from [Size] <= 5000000 to [Size] <= 50000000
6. Change CustomMessageTemplate  
from File data cannot be bigger than 5MB to File data cannot be bigger than 50MB



The screenshot shows the configuration interface for validation rules. The 'Criteria' field is highlighted with a red box and contains the text '[Size] <= 50000000'. The 'CustomMessageTemplate' field is also highlighted with a red box and contains the text 'File data cannot be bigger than 50MB'. Other fields include 'TargetContextIDs' (Save), 'TargetCriteria', 'Data' (Criteria, TargetCollectionOwnerType: (none), TargetCollectionPropertyName), 'TargetType' (QnEBS.BO.Maint.Attachments), 'UsedProperties', 'eXpand' (PathToHere: Validation\Rules\DevExpress.Persistent.Validation), and 'Format' (MessageTemplateCollectionValidationMessageSuffix: (For the "{TargetCollectionOwnerType}},{TargetC

7. Save and Close
8. Logout and login again
9. Now you can attach file up to 50MB

\*\* Learn more about [Azure Cloud](#)

\*\* Learn more about [QNE Hybrid Cloud Software](#)