

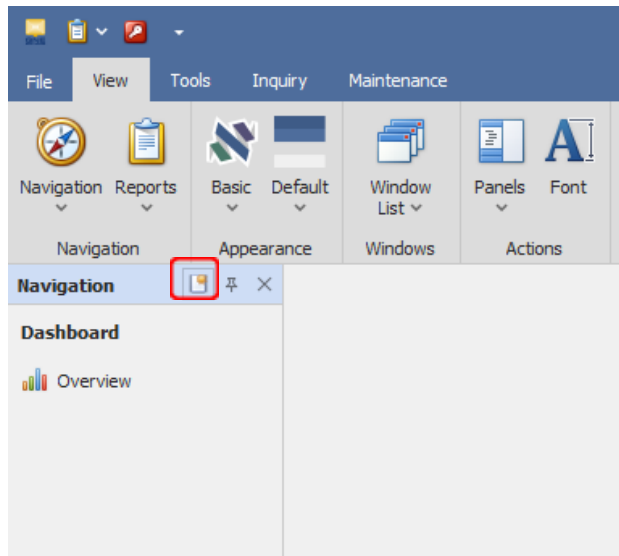
Quick Create Mode

In Optimum, users may have the option to set the system to “Quick Create” mode which will allow to quickly create new record upon selection of any transaction form.

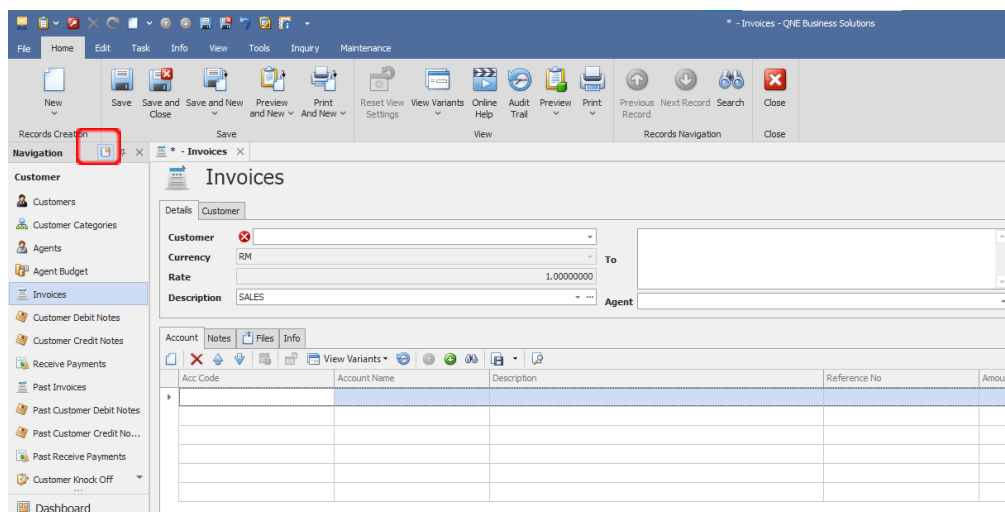
Scenario:

If user’s preference is to CREATE NEW transaction (e.g. Invoice) instead of having a view or list of all Invoices, “Quick Create” mode may be enabled.

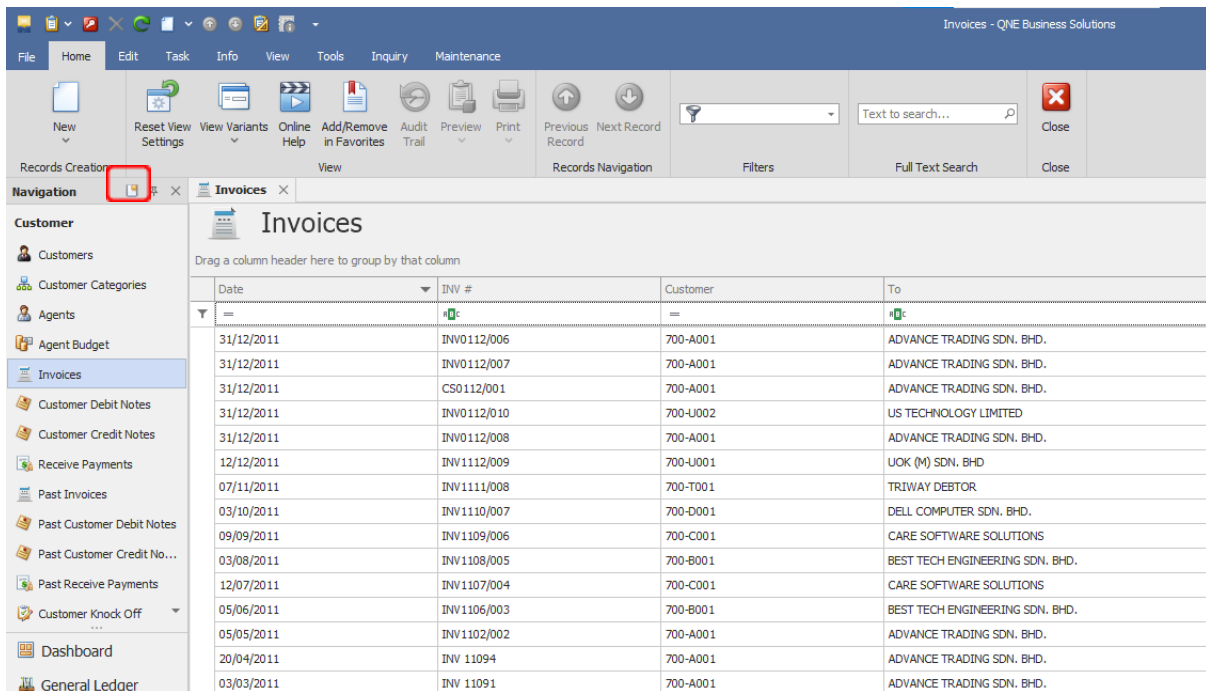
In Navigation Pane, make sure that “Quick Create” button is enabled like below:



Example when enable “Quick create” button and click for customer invoice, it will show create new record screen



If disable the “Quick Create” button, it will show in List View



The screenshot shows the QNE Business Solutions interface for Invoices. The top navigation bar includes tabs for File, Home, Edit, Task, Info, View, Tools, Inquiry, and Maintenance. Below this is a toolbar with various icons for actions like New, Reset View Settings, View Variants, Online Help, Add/Remove in Favorites, Audit Trail, Preview, Print, Previous Record, and Next Record. A search bar and a Close button are also present.

The left sidebar (Navigation pane) shows a tree structure with categories like Customer, Customers, Customer Categories, Agents, Agent Budget, Invoices (highlighted), Customer Debit Notes, Customer Credit Notes, Receive Payments, Past Invoices, Past Customer Debit Notes, Past Customer Credit No..., Past Receive Payments, Customer Knock Off, Dashboard, and General Ledger. The 'Quick Create' button is highlighted with a red box.

The main area displays the 'Invoices' list view. It includes a header for 'Invoices' and a prompt to 'Drag a column header here to group by that column'. Below this is a table with the following columns: Date, INV #, Customer, and To. The table contains 18 rows of invoice data.

Date	INV #	Customer	To
31/12/2011	INV0112/006	700-A001	ADVANCE TRADING SDN. BHD.
31/12/2011	INV0112/007	700-A001	ADVANCE TRADING SDN. BHD.
31/12/2011	CS0112/001	700-A001	ADVANCE TRADING SDN. BHD.
31/12/2011	INV0112/010	700-U002	US TECHNOLOGY LIMITED
31/12/2011	INV0112/008	700-A001	ADVANCE TRADING SDN. BHD.
12/12/2011	INV1112/009	700-U001	UOK (M) SDN. BHD
07/11/2011	INV1111/008	700-T001	TRIWAY DEBTOR
03/10/2011	INV1110/007	700-D001	DELL COMPUTER SDN. BHD.
09/09/2011	INV1109/006	700-C001	CARE SOFTWARE SOLUTIONS
03/08/2011	INV1108/005	700-B001	BEST TECH ENGINEERING SDN. BHD.
12/07/2011	INV1107/004	700-C001	CARE SOFTWARE SOLUTIONS
05/06/2011	INV1106/003	700-B001	BEST TECH ENGINEERING SDN. BHD.
05/05/2011	INV1102/002	700-A001	ADVANCE TRADING SDN. BHD.
20/04/2011	INV 11094	700-A001	ADVANCE TRADING SDN. BHD.
03/03/2011	INV 11091	700-A001	ADVANCE TRADING SDN. BHD.

This setting will be recommended for users who prefer to be presented with the pre-encoded data and easily find any record in just a look, with fewer scrolls and clicks.

Whether “Quick Create” mode is ON or OFF depending on user’s preference.

**** Learn more about [Azure Cloud](#)**

**** Learn more about [QNE Hybrid Cloud Software](#)**